

BIOplus

Model No: SBPL1930

Fingerprint + Card Based Terminal for Multi-Location and Access Management



BIOplus is compact *Fingerprint + Card Based Terminal for Multi-Location and Access Management Device with best in class optical fingerprint sensor & industry standard features..*

Applications:

Time Attendance- Real time centralized attendance for SME/Large Enterprises, Govt. institute, Banks, Healthcare, data centers, construction, Education, IT/Call centers, Hospitality, Pharma & other institutes..

Access Control – standalone Access controller for Micro business etc..

Features & Benefits :

- Compact Design with 2.4" color TFT which provide elegant aesthetic look
- Capacitive touch keypad for user-friendly, easy to operate and configuration
- Unmatched performance with 32bit high speed Processor.
- Multiple RFID technology for flexibility to use wide range of access Credentials
- Rugged optical sensor with auto template update facility, which avoids re-registration over the period

TECHNICAL SPECIFICATIONS

Particulars	BIOplus
Model No	SBPL1930
Application	Access & Attendance
CPU	32 Bit RISC M4L Processor
Memory	Up to 8 MB Flash
Events/Transactions	Up to 1,00,000
Users	Up to 50,000
Fingerprint Templates	Up to 19,000 (1:N),(1:1)
Operation Modes	Finger Only, Card Only, Card+Finger, Card+Pin, Card+Finger+Pin On Wiegand Card Only, Finger Only & Card+Finger
Inbuilt Card Reader Options	EM Proximity Mifare/Smart Card HID Prox HID iClass
Exit Port	Egress Switch or Weigand Reader for Exit
Weigand In/Out	Available (26/32/34/42/44 Bit)
Communications Port	TCP/IP, RS485, GPRS*, Wi-Fi*, POE* (*Optional)
Baud Rate	9600bps (Default)
Input/Output	3 I/P (Door Status, Egress, Fire) & 2 O/P (DOTL, Door Lock)
Controller ID	Up to 9999
Display	128*64 Blue/Grey Graphical Display
Keypad	Capacitive Touch Sense Keypad
LED	Tricolour LED Bar
Sound	Beep & Buzzer Sound
Ingress Protection	NA
Power Supply	12 V DC/ 2A (Min) , POE (Optional only for attendance)
Enclosure	ABS Material
Dimension(LxHxW) in mm	105 x 167 x 45
Mounting	Wall Mounting
Finger Print Sensor	Most rugged and accurate optical finger print sensor
Finger Score	Display finger quality score at the time of finger registration
Image Size Resolution	500 dpi
EER/FAR/FRR	<0.1%, 0.001%, 0.1%
Verification & Enrollment	<1 sec
Template Size	384 bytes
Authentication/Identification	1:1 & 1:N (User Groups for faster verification)
Facility Code	Available with Card Reader
Time Zone / Access Levels	63 + 1 (Free Time Zone) / Unlimited
Time Zone Slots	4 slots per Day
Anti-Passback	Hard, Soft, Escort (Reader Wise)
Holiday Settings	42
Certification	CE,ROHS

*Indicate for optional features

PRODUCT SELECTION GUIDE

Model No	Description
SBPL1930	BIOplus fingerprint terminal for attendance & Access with 50k users & 100K events, 19K finger templates, TCP/IP, Weigand (In/Out)
SBPL1930-Wifi	BIOplus fingerprint terminal for attendance & Access with 50k users & 100K events, 19K finger templates, TCP/IP, Weigand (In/Ou) + Wi-Fi Module
SBPL1930-GPRS	BIOplus fingerprint terminal for attendance & Access with 50k users & 100K events, 19K finger templates, TCP/IP, Weigand (In/Ou (In/Out) + GPRS
SBPL1930-POE	BIOplus fingerprint terminal for attendance & Access with 50k users & 100K events, 19K finger templates, TCP/IP, Weigand (In/Ou (In/Out) + POE module
SBPL1930-P	BIOplus fingerprint terminal for attendance & Access with 50k users & 100K events, 19K finger templates, TCP/IP, Weigand (In/Ou (In/Out) + In-built EM Proximity card reader
SBPL1930-S	BIOplus fingerprint terminal for attendance & Access with 50k users & 100K events, 19K finger templates, TCP/IP, Weigand (In/Ou (In/Out) + In-built Mifare Smart Card Reader
SBPL1930-HI	BIOplus fingerprint terminal for attendance & Access with 50k users & 100K events, 19K finger templates, TCP/IP, Weigand (In/Ou (In/Out) + In-built HID iClass Card Reader
SBPL1930-HP	BIOplus fingerprint terminal for attendance & Access with 50k users & 100K events, 19K finger templates, TCP/IP, Weigand (In/Ou (In/Out) + In-built HID Prox Card Reader
SBPL1930-MT	BIOplus fingerprint terminal for attendance & Access with 50k users & 100K events, 19K finger templates, TCP/IP, Weigand (In/Ou (In/Out) + In-built HID Multicard Reader for HID iClass, HID Prox, EM Proximity, Mifare Smart Card.
SBPL1930-P-Wifi	BIOplus fingerprint terminal for attendance & Access with 50k users & 100K events, 19K finger templates, TCP/IP, Weigand (In/Ou (In/Out) + In-built EM Prox Card Reader + Wi-Fi Module
SBPL1930-S-Wifi	BIOplus fingerprint terminal for attendance & Access with 50k users & 100K events, 19K finger templates, TCP/IP, Weigand (In/Ou (In/Out) + In-built Mifare Smart Card Reader + Wi-Fi Module
SBPL1930-HI-Wifi	BIOplus fingerprint terminal for attendance & Access with 50k users & 100K events, 19K finger templates, TCP/IP, Weigand (In/Ou (In/Out) + In-built HID iClass Card Reader + Wi-Fi Module
SBPL1930-HP-Wifi	BIOplus fingerprint terminal for attendance & Access with 50k users & 100K events, 19K finger templates, TCP/IP, Weigand (In/Ou (In/Out) + In-built HID Prox Card Reader + Wi-Fi Module
SBPL1930-MT-Wifi	BIOplus fingerprint terminal for attendance & Access with 50k users & 100K events, 19K finger templates, TCP/IP, Weigand (In/Ou (In/Out) + In-built HID Multicard Reader for HID iClass, HID Prox, EM Proximity, Mifare Smart Card + Wi-Fi Module
SBPL1930-P-GPRS	BIOplus fingerprint terminal for attendance & Access with 50k users & 100K events, 19K finger templates, TCP/IP, Weigand (In/Ou (In/Out) + In-built EM Prox Card Reader + GPRS module
SBPL1930-S-GPRS	BIOplus fingerprint terminal for attendance & Access with 50k users & 100K events, 19K finger templates, TCP/IP, Weigand (In/Ou (In/Out) + In-built Mifare Smart Card Reader + GPRS Module
SBPL1930-HI-GPRS	BIOplus fingerprint terminal for attendance & Access with 50k users & 100K events, 19K finger templates, TCP/IP, Weigand (In/Ou (In/Out) + In-built HID iClass Card Reader + GPRS module
SBPL1930-HP-GPRS	BIOplus fingerprint terminal for attendance & Access with 50k users & 100K events, 19K finger templates, TCP/IP, Weigand (In/Ou (In/Out) + In-built HID Prox Card Reader + GPRS module
SBPL1930-MT-GPRS	BIOplus fingerprint terminal for attendance & Access with 50k users & 100K events, 19K finger templates, TCP/IP, Weigand (In/Ou (In/Out) + In-built HID Multicard Reader for HID iClass, HID Prox, EM Proximity, Mifare Smart Card + GPRS module
SBPL1930-P-POE	BIOplus fingerprint terminal for attendance & Access with 50k users & 100K events, 19K finger templates, TCP/IP, Weigand (In/Ou (In/Out) + In-built EM Prox Card Reader + POE module
SBPL1930-S-POE	BIOplus fingerprint terminal for attendance & Access with 50k users & 100K events, 19K finger templates, TCP/IP, Weigand (In/Ou (In/Out) + In-built Mifare Smart Card Reader + POE Module
SBPL1930-HI-POE	BIOplus fingerprint terminal for attendance & Access with 50k users & 100K events, 19K finger templates, TCP/IP, Weigand (In/Ou (In/Out) + In-built HID iClass Card Reader + POE module
SBPL1930-HP-POE	BIOplus fingerprint terminal for attendance & Access with 50k users & 100K events, 19K finger templates, TCP/IP, Weigand (In/Ou (In/Out) + In-built HID Prox Card Reader + POE module
SBPL1930-MT-POE	BIOplus fingerprint terminal for attendance & Access with 50k users & 100K events, 19K finger templates, TCP/IP, Weigand (In/Ou (In/Out) + In-built HID Multicard Reader for HID iClass, HID Prox, EM Proximity, Mifare Smart Card + POE module

Software Compatibility:

SSTA30-TA-100U (PACK) – smartATTENDANCE desktop based time attendance software

SSA30-AS-100U (PACK) – smartACCESS desktop based software

SCMD-DUO-100U (PACK) – smartCOMMANCONTROL pack web based access + attendance + employee self service software

SALM – smartALARM - Alarm Management Software for smartCOMMANDCONTROL / smartACCESS

SVM20-AS - 'smartVISITOR' Visitor Management Software (Server License) (Advance Edition) with SQL Express database .This will include a common license for Host, Security and Admin .SQL License in Customer Scope.

SVM20-ES - smart VISITOR' Visitor Management Software (Enterprise Edition) , Web Based Server License (Including Web based Admin & Host module and desktop based security module)-MS SQL Database.

smartTRACK-10U - Mobile attendance Application compatible with android smart phone

Cards

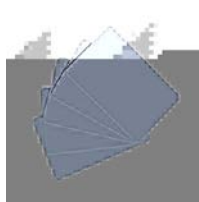
SC-M1

Mifare - Smart Card
(Memory:1K)



SC-M4

Mifare - Smart Card
(Memory:4K)



PC

EM Proximity Cards



Readers

SPR501

smartRID - Wiegand Protocol
Card Readers –proximity reader



SC504

smartRID - Wiegand
Protocol Card Readers –
smart card reader



Locks & Switches

EL-600

600lbs- electromagnetic locks



SIS-ES-NT

No Touch Egress Switch

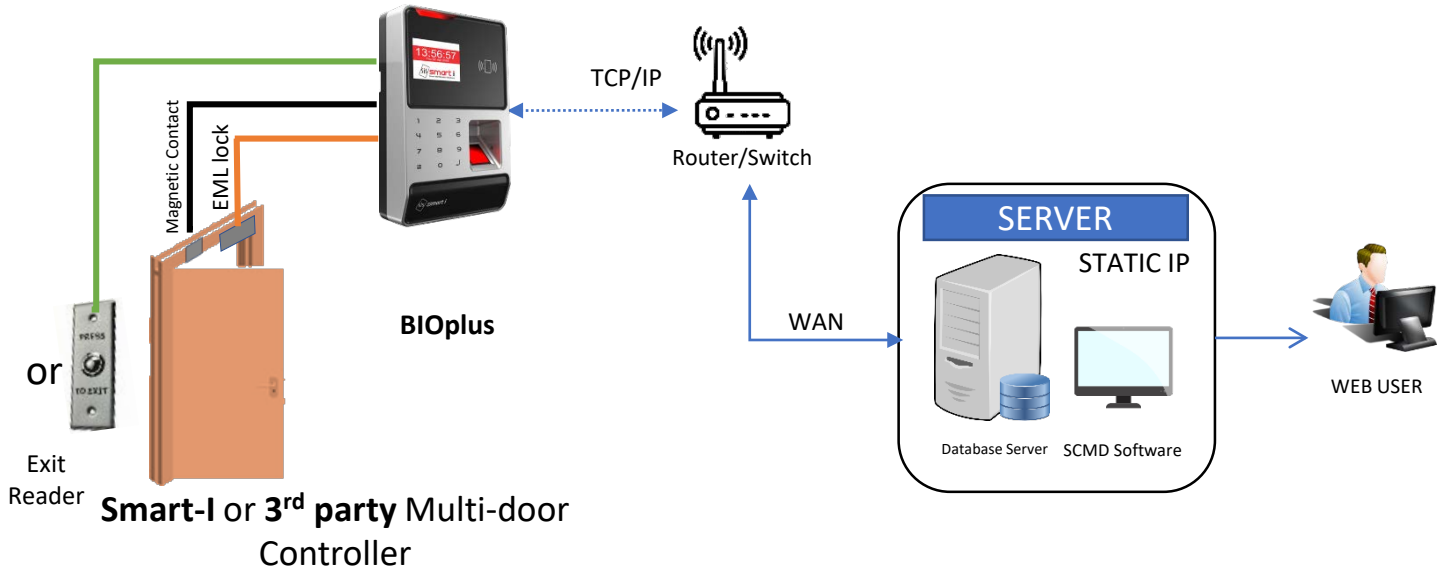


SIS-ES-PUSH

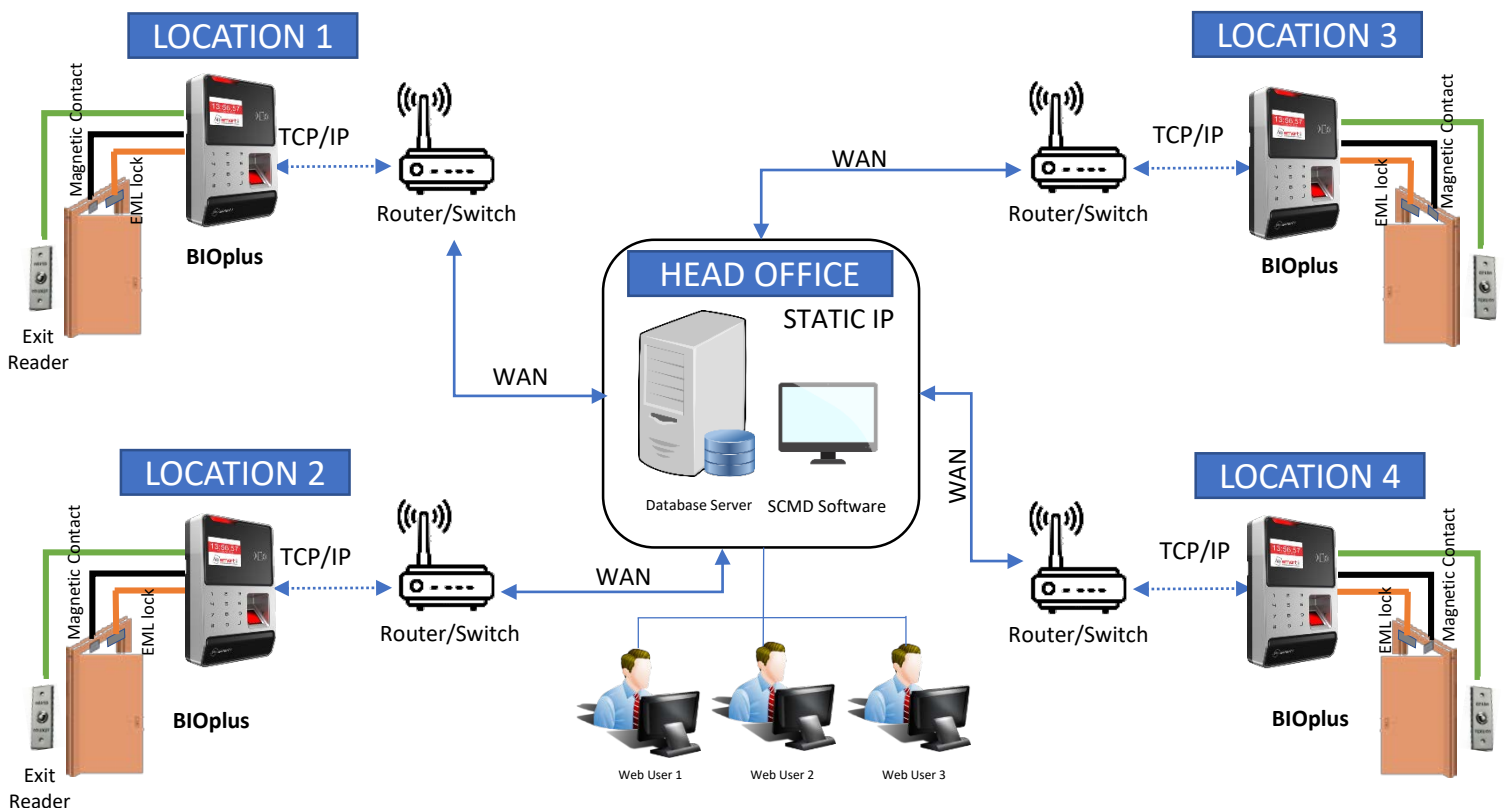
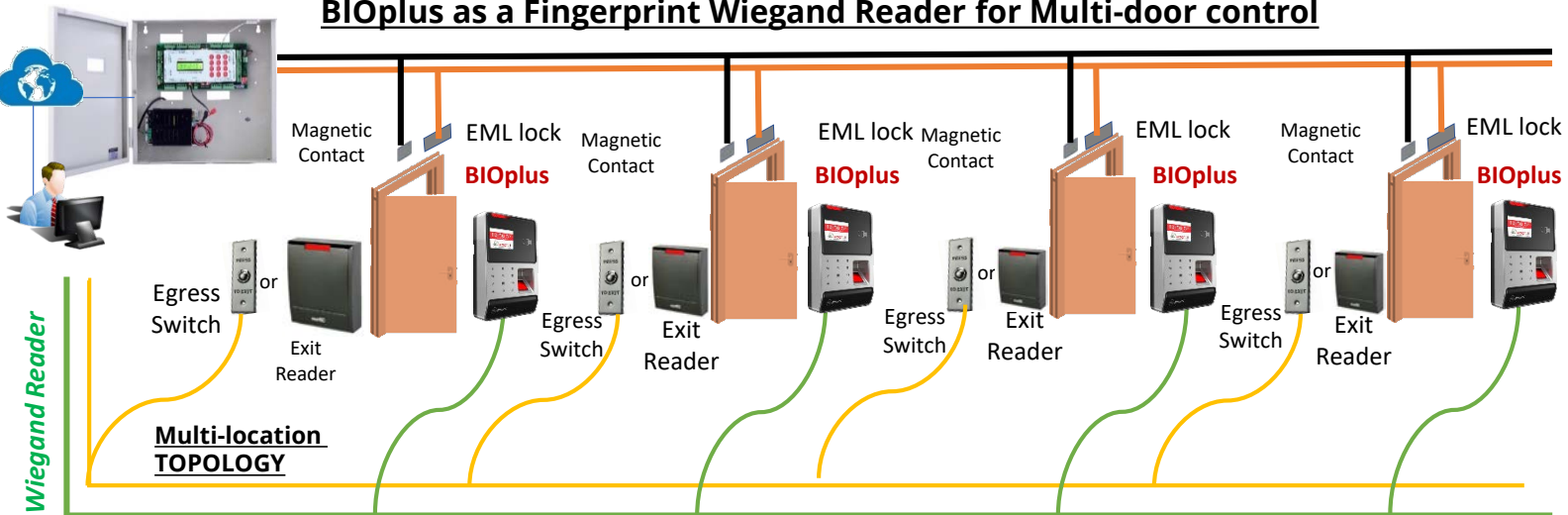
Door Release Button



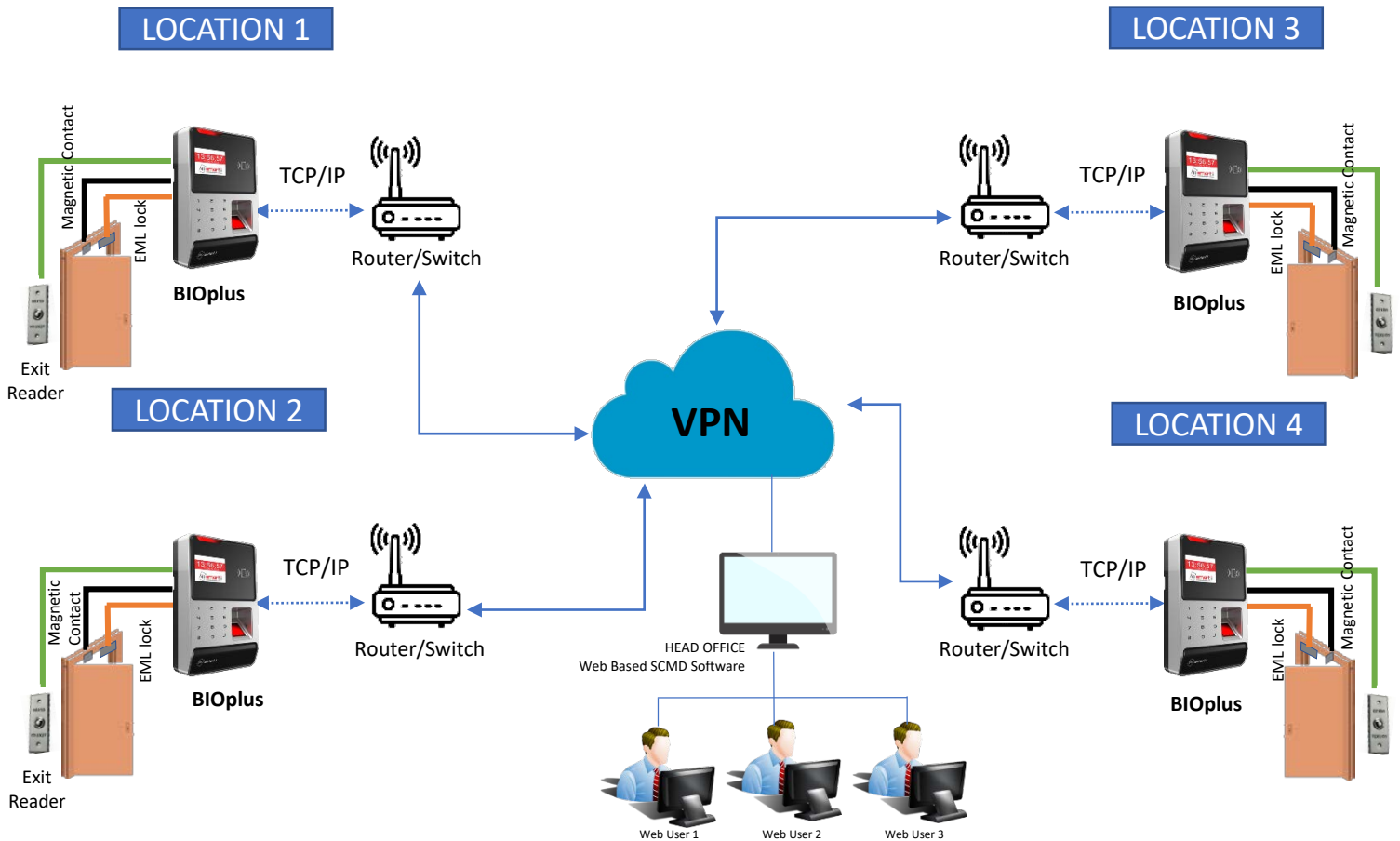
BIOplus as a Single Door Access Controller



BIOplus as a Fingerprint Wiegand Reader for Multi-door control



Multi-location TOPOLOGY



Software Key Features

- Multi Location Application
- Integrated HR Module
- Integration With Mobile Apps for field & work from Home Staff
- Global Access Policy & Default Access Policy.
- Useful MIS Reports For Attendance & Access.
- Integrated Alarm Management
- Integrated Visitor Management
- Comprehensive Attendance Policy with Leave & Multiple Shift Management



Note: Product images are for illustrative purposes only and may differ from the actual product. Some products may have an associated image or photo. These are for reference only and should be considered illustrative. Technical Specifications subject to change without any notice.

Smart-I Electronic Systems Pvt Ltd | Bhumi World Industrial Park | Building No D-7 | Unit No 250 to 253 | Pimpas, Bhiwandi | Thane - 421302, Maharashtra, INDIA

Copyright@Smart-I Electronic Systems Pvt. Ltd. All rights reserved. Technical Specifications, Model Number and Product availability subject to change without notice*.
 Connect with us Today - www.smartisystems.com or +91-8767-247-247 | +91- 02522-616500
 Email: enquiry@smartisystems.com | sales@smartisystems.com