



USER MANUAL

smartSWING

— VERSION 001 —



SMART-I ELECTRONICS SYSTEMS PVT. LTD.

An ISO 9001:2008 certified company

Units No 250 to 252, Second Floor, Building No D-7, Bhumi World, Pimpas Village, Bhiwandi,
Thane-421302, Maharashtra. INDIA. Contact:- (+91) 7039047042 , (+91) 02522-661518

Web: www.smartisystems.com E-mail: enquiry@smartisystems.com

PRESENCE: MUMBAI-DELHI-BANGALORE-KOLKATA-CHENNAI-AHMEDABAD-PUNE-HYDERABAD

Preface

Congratulations on purchasing your new **smartSWING** and thank you for the confidence you have shown in us. You have chosen a high-quality product that has been manufactured, tested and packed with care.

Please familiarize yourself with these instructions, before attempting to install the **smartSWING**. Because prolonged reliable and trouble-free operation will only be ensured if it is fitted properly. We hope your new **smartSWING** will bring you lasting safety and effective operations for your employee attendance.

smartSWING series are Cost effective **smartSWING** System with rugged design & Touchscreen keypad. It boasts of compact aesthetics and strong design with flawless fingerprint optical sensor.

Disclaimer:

- *Please handle the equipment with care. Physical Damage to the system is not covered under warranty.*
- *Do not power on the system without reading this manual. Ensure proper power supply with Earthing.*
- *Note down the serial number and model no. of the device for future reference and quote in all support and service requests.*
- *To connect or interface the Card reader to the '**smartSWING**' unit please refer to the Hardware Installation Guide or Manual and carefully follow the instructions. A trained technician must make the connections.*
- *Any negligence on your part may damage the Card reader interface on the **smartSWING** terminal.*
- *Mounting the unit in strong sunlight may affect user visibility of the LCD. Ensure that the LCD and LED's are clearly visible in all lighting conditions.*
- *The fingerprint sensor glass may periodically require cleaning - use suitable glass cleaner.*
- *Never insert objects of any kind into the unit or through the cabinet slots as they may touch voltage points and/or short circuit parts possibly resulting in fire or electric shock. Never spill liquid of any kind on the unit.*
- *When connecting up the **smartSWING** ensure that the mains power supply is safely isolated. Power up the controller only when installation is complete.*



As this product is regularly updated, we cannot guarantee exact consistency between this product and the information provided in these instructions. We will hear no disputes that arise due to differences between the actual product and the contents of these instructions, and you may not be informed of **changes in advance**.

TABLE OF CONTENT

INTRODUCTION	4
KEY BENEFITS	4
SPECIFICATIONS	5
FEATURES	5
OUTER STRUCTURE	6
LED INDICATIONS	6
IMPORTANT PARTS FOR INSTALLATIONS	7
CONNECTOR DETAILS	8
PLACEMENT OF CONNECTOR	9
CONNECTIONS DETAILS	10
WIRING DIAGRAM	

Warning & Caution

- Please handle the equipment with care. Physical Damage to the system is not covered under warranty.
 - Do not power on the system without reading this manual. Ensure proper power supply with Earthing.
 - Note down the serial number and model no. of the device for future reference and quote in all support and service requests.
 - To connect or interface the Card reader to the 'BIOtrak' unit please refer to the Hardware Installation Guide or Manual and carefully follow the instructions. A trained technician must make the connections.
 - Any negligence on your part may damage the Card reader interface on the BIOtrak terminal.
 - Mounting the unit in strong sunlight may affect user visibility of the LCD. Ensure that the LCD and LED's are clearly visible in all lighting conditions.
 - The fingerprint sensor glass may periodically require cleaning - use suitable glass cleaner.
 - Never insert objects of any kind into the unit or through the cabinet slots as they may touch voltage points and/or short circuit parts possibly resulting in fire or electric shock. Never spill liquid of any kind on the unit.
 - When connecting up the BIOtrak Access Controller ensure that the mains power supply is safely isolated. Power up the controller only when installation is complete.
-

Fire Safety and accountability Notice

When connecting card or Biometric readers to any emergency entry, exit door, barrier or elevator must provide an alternative exit in accordance with all fire and life safety codes pertinent to the installation. These fire and safety codes vary from city to city and you must get approval from local fire officials whenever using an electronic product to control a door or other barrier.

Introduction

- Swing Handle Lock provides Electronic and Mechanical Lock facility via Biometric and Card access.
- Electronic Locking Swing Handle features an efficient microprocessor-controlled gear motor design that ensures minimal power consumption and provides intelligent locking and monitoring capabilities.
- Status of Lock can be identified with the help of 4 Color LED Indication.
- In case of Power Failure, Swing Handle Lock can also be opened with a key.

Key Benefits

- Simple operation with lift and turn handle
- Hand, Key and Tool security options
- Remote lock and unlock
- Seals out water and dust

Grip adjustable for precise door closure

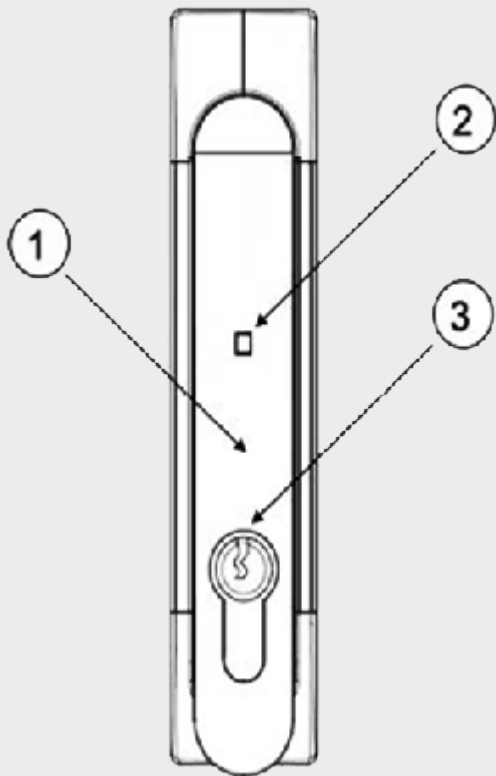
Specifications

Sr.No.	Specification	Description
1	RGB Led	Indicates Status of Lock
2	Color /Appearance	Black
3	Linear Solenoid	Used for Latching Purpose
4	Power	12VDC/2Amp Power Supply
5	Overall Dimensions	170.6 x 37 x50.25mm
6	Output	Used to sense Lock is open or Closed

Features

- Remote lock and unlock capability.
 - Single or multi-point lock actuation.
 - Momentary or continuous lock actuation.
 - 4 Color Indication for lock and handle status.
 - Accommodates both left and right doors.
 - For indoor use only.
-

Outer Structure of Swing Handle



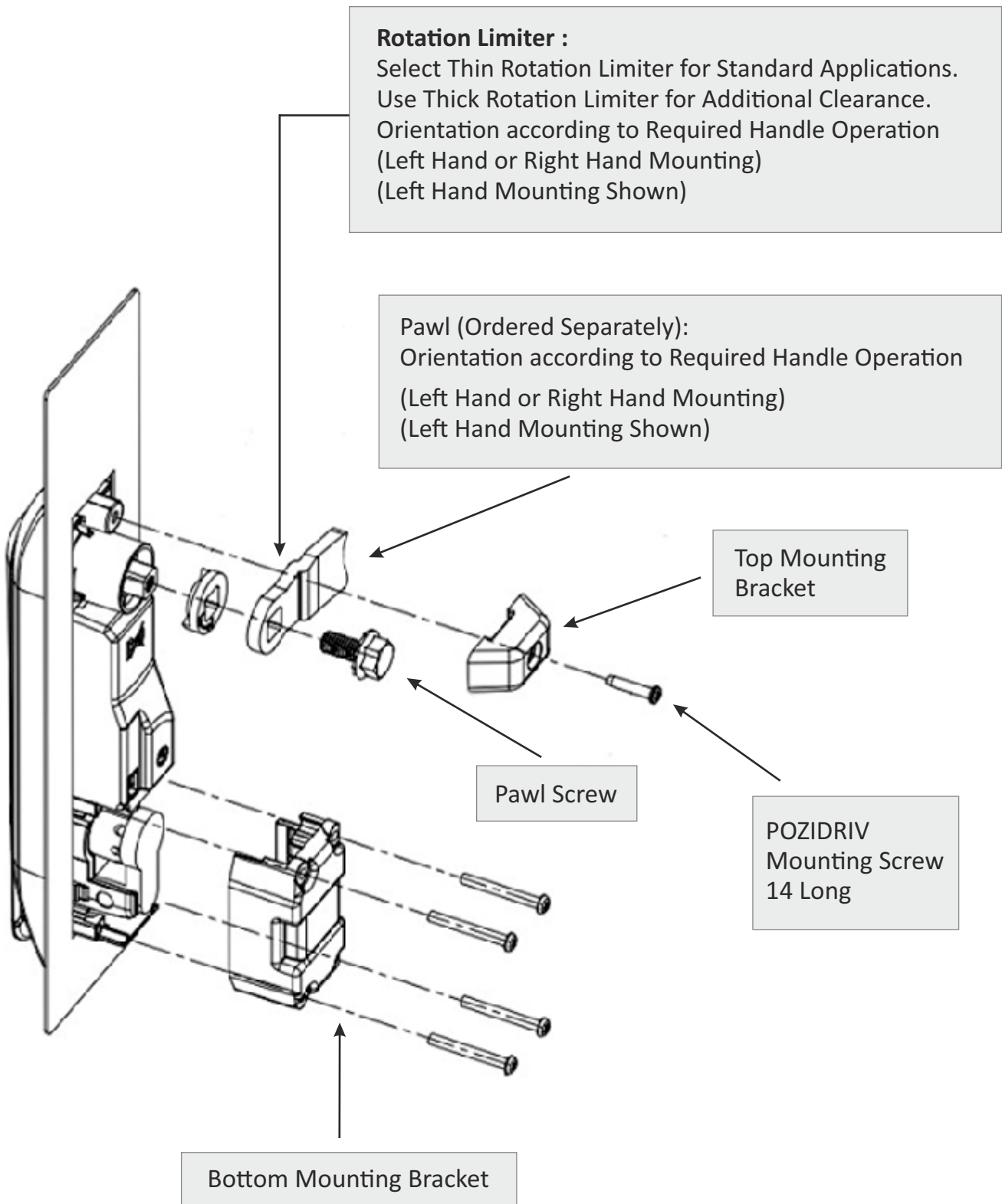
1. Handle
2. 4-Color Status LED (Red, Green, Purple, Cyan)
3. Lock Plug

LED indications

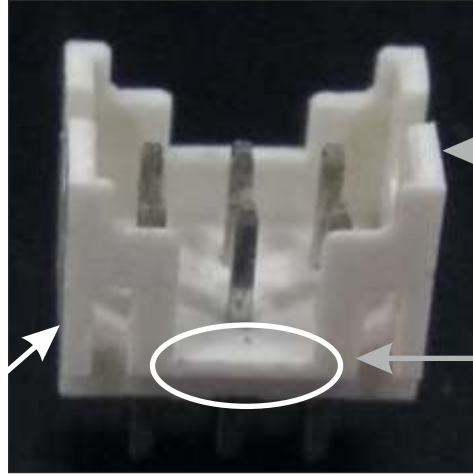
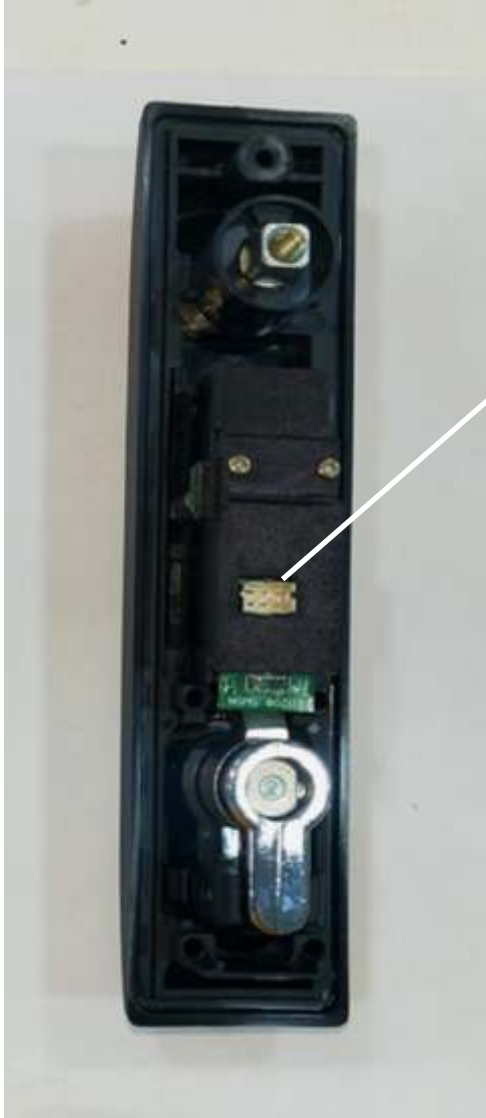
The latch is equipped with a 4-color LED visible from the front of the latch. This LED provides a visible notification of the latch status. Different Latch States for Control Input Signal, Electronic Lock Status Output Signal, and Mechanical Lock Status Output Signal sections are described below.

Status of LOCK	4-Color LED Status
Lock(Mechanically closed and Electrically closed)	RED
Mechanically closed and Electrically open	GREEN
Mechanically open and Electrically closed	PURPLE(RED + BLUE)
Mechanically open and Electrically open	CYAN(GREEN + BLUE)

Important parts for Installation

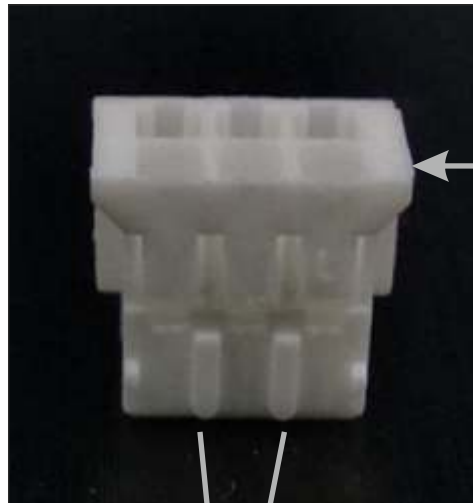


Connector Details



6Pins (2x3)
Male
Connector

Deeper Slot at
the 6Pins (2x3)
Male Connector

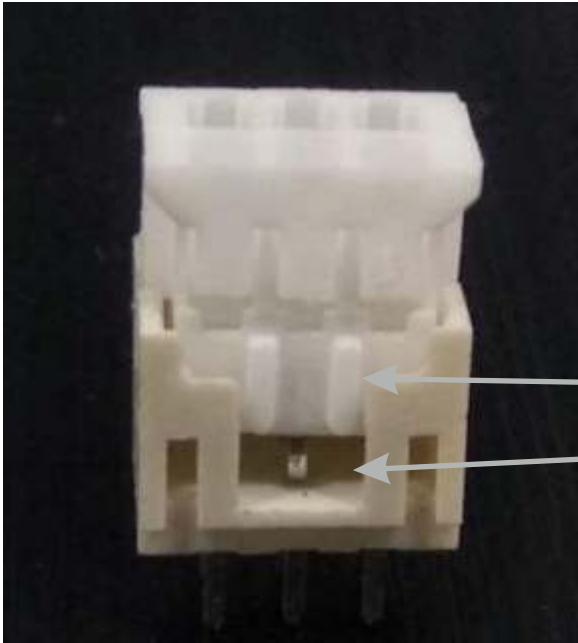


6Pins (2x3)
Female
Connector

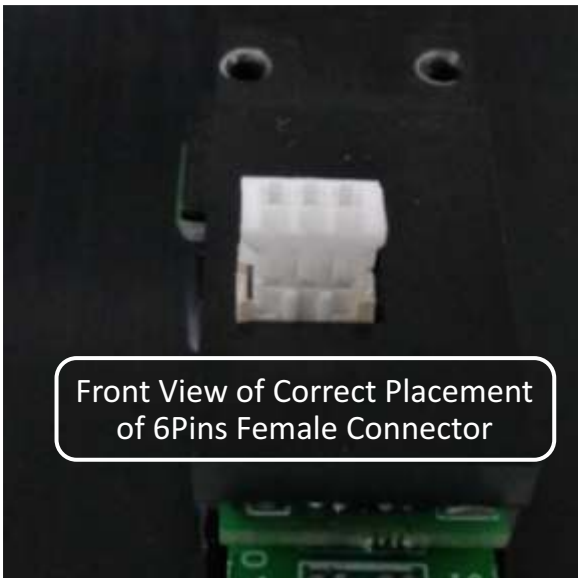
Notch at the 6Pins (2x3)
Female Connector

Placement of Connector

6Pins (2x3) female connector at one end of the Harness OR Cable must to be connected correctly on top of the 6Pins (2x3) male connector as shown below



This figure shows proper alignment of Notch of 6Pins Female Connector with the Deeper Slot Side of 6Pins Male Connector



Connection Details

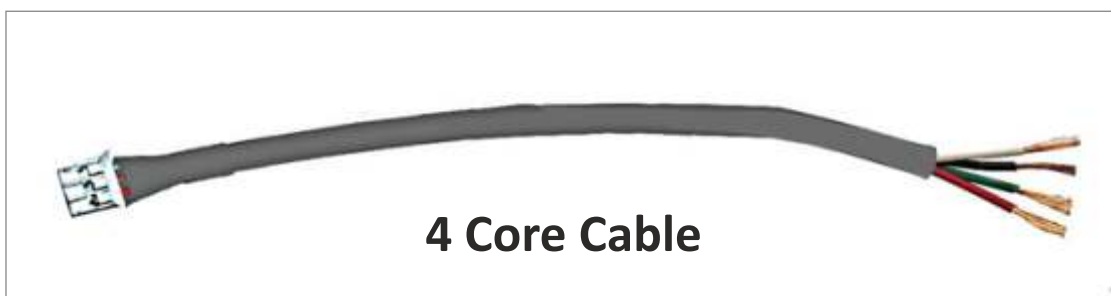
Swing Handle Lock can be externally connected to Supply Voltage by two means

a) Rj45 Cable Harness

- Connect the 6Pins Female Connector at one end of Rj45 Cable Harness to Swing Handle Lock.
- Connect other end of RJ45 connector to Junction PCB using Patch Cord.

b) 4 Core Cable

- Connect the 6Pins Female Connector at one end of 4Core Cable to Swing Handle Lock.
- Solder the wires at the other end of 4Core Cable to Junction PCB.



WARRANTY CERTIFICATE

Valid in India

We, **SMART-I ELECTRONICS SYSTEMS PVT. LTD.** (herein after referred as "Company"), Hereby gives a warranty for a period of 12 months from the date of purchase to the first purchaser. The warranty assures that the Company will repair or replace, without charges, any part or parts of the product (all hereinafter collectively referred to as the "product") sold and identified by the Company to be defective in material or workmanship under normal use. The Foregoing Warranty is Company's sole and exclusive warranty. The Company makes no other warranties of any kind, either express or implied. This warranty is subject to the following limitations:

Limitations of Warranty

- 1 This warranty is confined of the first purchaser of the Product only.
- 2 This warranty does not cover damage(s) caused to the Product by reason of misuse, alteration, normal wear and tear, physical damage, accident, any acts of god, erratic power supply or failure to follow instructions issued by the company of proper usage of the product(s).
- 3 The Company is not liable for any incidental or consequential losses, costs, damages expenses or liability incurred by the customer caused due to fire, intrusion, theft, smoke etc. as a result of any defects in the Product sold or any of its parts requiring field repair, installation, or any other reason. The liability of the Company shall be restricted only to repair or replacement as mentioned above. This warranty assures free repair or replacement only of the defective Product and does not warrant the intended use of the Product.
- 4 The Company / its authorized representatives reserves the right to either repair or replace the Product at their discretion. If the required repairs can be carried out at the customer's place then the Company's authorized engineer will visit the customer's place and carry out repairs there. However, if the Product requires to be repaired at the Company's premises, then the Company's engineer is authorized to bring back the product or any of its part(s) for repair / replacement at the company's authorized service center.
- 5 If at any stage it is found that the Product has been unauthorized tampered, in that case this warranty shall lapse immediately and there upon the Company shall stand absolved from all its obligations under this warranty.

- 6 The Company does not represent that the service it offers and the product it provides may not be compromised or circumvented, and that the product will prevent any personal illness or loss of health by infection, or otherwise, or that the product in any case provides accurate warning or protection. Customer understand and fully aware that a properly installed and maintained electronic screening system may only reduce the risk of infection, illness, or other events which may occur without such systems and screening, but is not an insurance or a guarantee or an assurance of prevention, or any assurance that such a situation will not occur or that there will be no personal illness or loss to health as a result of any such situation.
- 7 If the customer has defaulted in payments of any of its dues to the Company, then this warranty shall stand suspended till the time the customer clears all his defaults, and such period shall be counted in calculating the total period of warranty. In such circumstances the Company reserves the right to carry out repair / replacement under this warranty at its own discretion.
- 8 In the event of repairs / replacement of any of the Product or part(s) thereof, this warranty will thereafter continue and remain in force only for the unexpired period of the warranty. Moreover the time taken for repair / replacement and in-transit whether under the warranty or otherwise shall not be excluded from the warranty.
- 9 The Company is not liable for any delay in servicing due o reasons beyond the control of the Company or any of its Authorized Service Centers.
- 10 If the Product is given on rent or allowed to be used by any person other than the first customer without the prior written approval of the Company, then this warranty shall not remain in force and shall lapse with immediate effect.
- 11 If the Product is removed from the place where it was installed by the Company without prior approval of the Company, then the Company shall not be liable to honor this warranty.
- 12 In case after installation of the Product, the location of the place where the Product is installed is to be changed, then at least one week before the date of change, intimation is to be given to the Company or its Authorized Service Centre so that the warranty obligation for the remaining part of the warranty can be transferred to the new location of the first purchaser. in such a case,

if services of the Company's technicians are required, separate service charged(s) will be levied by the Company depending upon the type and extent of the service(s) required.

- 13 Damage(s) to the Product or any of its part(s) caused during shifting or transportation is not covered under this warranty, unless such shifting or transportation is done by the Company itself.
 - 14 Although the Company will make every effort to carry out repair / replacement under this warranty as soon as possible, the Company shall not be liable to do so within any specified time.
 - 15 This warranty shall terminate on expiry of the warranty period for which it is given irrespective of whether the Product was in use or not.
 - 16 The Company / its Authorized Service Centres reserves the right to retain any part(s) of Component replaced at its discretion in the event of a defect noticed in the Product during the warranty period.
 - 17 The Company's employees or authorized representatives have no authority to vary any of the terms of this warranty.
 - 18 This Warranty is issued in lieu of all other conditions expressed or implied by law or by any person purposing to act on behalf of the Company and excluded every condition not herein expressly set out. This Warranty is issued at Mumbai and Courts at Mumbai shall have exclusive jurisdiction on matters covered by or arising out of this warranty. If a customer wants repair / replacement to be carried out to the Product or any of its part(s) etc., under this warranty, he should contact any of the contact details as given below.
 - 20 The Company has currently launched the Product in 67 cities of India as per the list given overleaf. The Company will give warranty support to the customer in the geographical vicinity of these cities only.
-

Customer: _____ Dealer: _____

Address: _____

Date of Purchase: ____ / ____ / _____

Product Name: _____ Item Code: _____

Serial No: _____

Franchisee Details

Name: _____ Date: ____ / ____ / _____

Address: _____

Stamp

List of Cities for company's Warranty Support

1. Agra	22.Guwahati	45.Navasari
2. Ahmedabad	23.Hubli/Dharwad	46.Panipat
3. Ajmer	24.Hydrabad	47.Patiala
4. Akola	25.Indore	48.Patna
5. Allahabad	26.Jabalpur	49.Pondicherry
6. Anand	27.Jaipur	50.Pune
7. Aurangabad	28.Jalandhar	51.Raipur
8. Bangalore	29.Jammu	52.Rajkot
9. Baroda	30.Jodhpur	53.Ranchi
10 Belgaum1	31.Kanpur	54.Rourkela
1. Bhavnagar	32.Kochi	55.Salem
12.Bhilai	33.Kolhapur	56.Sangli
13.Bhopa	34.Kolkata	57.Silliguri
14.Bhubaneshwar /Cuttack	35.Kottayam	58Sonipat
15.Calicut	36.Lucknow	59.Surat
16.Chandigarh	37.Ludhiana	60.Tatanagar
17.Chennai	38.Madurai	61.Thrissur
18.Coimbatore	39.Mangalore/Udupi	62.Trichy
19.Delhi /NCRF	40.Mehsana	63.Trivandrum
20.Durgapur	41.Mumbai	64.Udaipur
21.Goa/Punjim & Madgaon only	42.Mysore	65.Ujjain
	43.Nagpur	66.Vapi
	44.Nasik	67.Vizag

-
- The Service Contract option will be extended to these 67 cities only
 - The proposed contract is a National Service Contract which can be transferred to any of the 67 cities to which we would cater
 - As we go forward we plan to extend it to other locations as well.

Fill in your details and post this portion of the warranty certificate to "**Manager - Service, Smart-i Electronics Systems Pvt. Ltd, Bhumi World, Pimplas, Bhiwandi, Thane, Maharashtra-421302.INDIA**" or hand over to "**SMART-I Representative**", The warranty will not be valid if the following portion is not sent within 15 days of purchase.

Customer: _____ Retailer/DSA/Franchisee: _____

Address: _____

Date of Purchase: _____

Invoice No: _____ Product Name: _____

Model No: _____ Serial No: _____

Contact Person: _____ Phone No: _____

Email ID: _____ Warranty Expiry: _____

Customer Industry Type: (please tick relevant)

Retail / Media Entertainment / Mall & Multiplexes/ Healthcare / IT&ITES
Education / BFSI / Manufacturing / Pharmaceutical / Tourism & Hotel

Environment: (please tick relevant)

Direct Sunlight / Air-Conditioned / Dusty / Humid

All Functions working properly: Yes/No

Whether device/s are connected to UPS: Yes/No

The system has been installed satisfactorily. I have read warranty conditions mentioned above.

Customer Sign: _____ Engineer Sign: _____

Customer Stamp: _____ Dealer/Distributor Stamp/Sign

SMART-I Electronics Systems Pvt. Ltd.



Regd Off:

Smart-i Electronics Systems Pvt. Ltd.

Bhumi World, Pimplas, Bhiwandi, Thane, Maharashtra-421302.INDIA
Call: +91-02522-661521/500 or email us at service@smartisystems.com