

smartSLIM



Extensively advanced & ultra-modern combination of biometric & access control device so far.

Major Features :

- Standalone Card+PIN device for Access & Attendance
- In-built card reader: Mifare, HID I Class, HID Prox, EM
- Includes varied communication port TCP-IP; Weigand; Rs485; POE; Bluetooth ; GPRS or Wi-Fi
- 2.4" TFT display with capacitive touch sense keypad
- CE certified product with high quality IP65 rated ABS plastic

Key Highlights

Added Security for access to the Devices:- Configurable card verification has been provided for extra security, in addition to the usual login id and password, to access the Controller device.

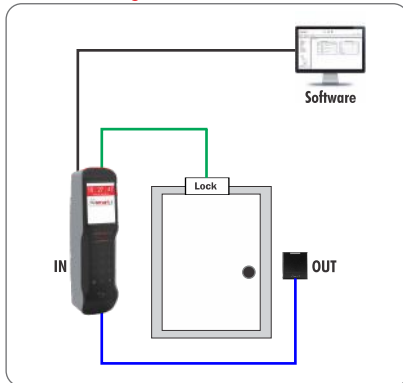
Data Security:- The IP address of the authorized computer/s is mapped with that of the controller, thus making the downloading of the data very secure.

Enhanced Security Features:- Anti pass back, facility/establishment code, Time zone, Duress Card/finger for enhanced security.

Remote and easy Online Up-gradation of the Firmware:- Device has an inbuilt tri-color LED which indicate various kind of device transaction process i.e.; Access Granted, Unauthorized Access, Command Activated, etc...

Compact and Elegant Look:- An aesthetic and elegant design with big TFT display and capacitive touch sense keypad is a value addition to the interior of the premises.

Connection Diagram



GENERAL SPECIFICATIONS

- Device should be having Matching Mode 1:N as well as 1:1
- SD Card provision for storing Card & Templates Buffer, Transaction Buffer, Device Configuration
- Most efficient Push Mechanism, for Multi Location Application, to push data from multiple locations to the central location almost in real time.
- Device should have facility to integrate with CCTV/IP camera to take the photograph of user when user swipe his card/Finger
- Should have Random attendance paging to ensure continuous Attendance during the day. It ensure employee will not left the premises during the working hour
- Device should be accessible with OTP (One Time Password) for fingerprint enrollment & Changing of Date and Time. User Enrollment & changes of date and time should not happen with normal User ID & Password.

Technical Specification

Particulars	Specifications			
Model No	STS7030 - TA Series STS7030 - AC Series			
Applications	Time Attendance & Access Control			
Hardware Specifications				
CPU	32 Bit RISC ARM Processor			
Memory	Up to 8 MB (Flash)			
Events/Transactions	Up to 1,00,000			
No. Users	Up to 40,000			
Operation Modes	Card Only; Card + PIN (On Wiegand Card Only)			
Inbuilt Card Reader	Mifare®; EM cards, HID Iclass & HID Prox			
Communications Port	TCP/IP; Wiegand			
Controller ID	Up to 10,000			
Display	2.4" TFT Color Display			
Keypad	Capacitive Touch Sense Keypad			
LED	Tri-color LED Bar			
Sound	Various Beep Sound Indication			
Power Supply	12 V DC/ 2A (Min), POE (Optional)			
Batter Backup	2 Hrs Battery backup (only for TA Device)			
Enclosure	IP-65, ABS Plastic			
Color	Silver & Black			
Dimension(L X H X W) in mm	58 x 210 x 49			
Mounting	Wall Mounting			
Temperature	0°C to 50°C			
Humidity	20% to 90%			
Access Control Feature				
Applicable in Model Nos	STS7030 - AC Series			
Facility Code	Available			
Time Zone / Access Levels	63 + 1 (Free Time Zone) / Unlimited			
Time Zone Slots	4 slots per Day			
Anti-Passback	Hard, Soft, Escort (Reader Wise)			
Holiday Settings	42			
Exit switch Supported	Yes			
Exit Reader Supported	Yes			
Input/Output	3 (Door Status, Egress, Fire) / 3 (DOTL, Lock, Alarm)			
Ordering Information				
Model No	Application	No of Users	Type	Inbuilt Reader
STS7030-TA-P/S/HP	Attendance	40000	Card + Pin	P - EM Proximity
STS7030-AC-P/S/HP	Access plus Attendance	40000	Card + Pin	S - MiFARE HI - HID iCLASS HP - HID Proximity
Software	Application	Architecture		
SSA30- AS Series	Access (Only)	Desktop Based Software		
SSTA30- AS Series	Attendance (Only)	Desktop Based Software		
SCMD Pack Series	Access + Attendance	Web-based Software		
Compliance	CE certified (EU directive 2001/95/EC & 1994/44/EC)			



* smart-i Policy is one of constant improvement. We reserve the rights to alter specifications without any prior notice.

smart i ELECTRONICS SYSTEMS PVT. LTD.

For more information call +91-8767-247-247

Email: enquiry@smartisystems.com

www.smartisystems.com

